

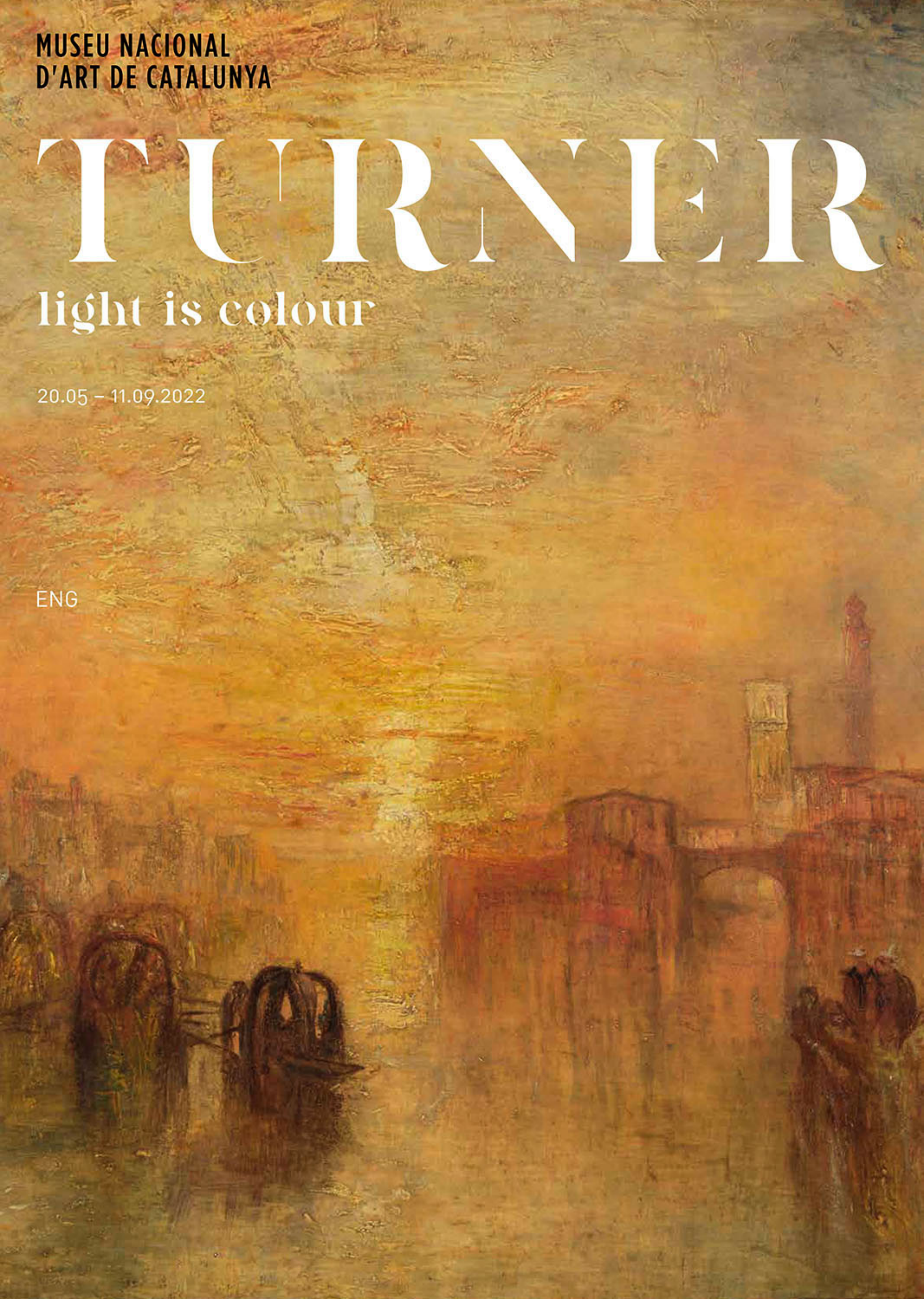
MUSEU NACIONAL
D'ART DE CATALUNYA

TURNER

light is colour

20.05 – 11.09.2022

ENG



This is the first exhibition at the Museu Nacional to be dedicated to the English romantic painter Joseph Mallord William Turner (1775-1851), the artist who elevated the genre of landscape painting to “high art”, with his mastery of light, colour and atmosphere.



J.M.W. Turner after Charles Turner. Detail
© National Portrait Gallery

Organised in collaboration with the Tate in London, the exhibition **explores Turner’s fascination with meteorological and atmospheric phenomena, including the sun – “the fairest of beings” – the moon and the clouds.**

Through over one hundred works on display – including paintings, watercolours, prints and sketchbooks – **we discover a wholly innovative creative process, both scientific and intuitive**, which allowed Turner to capture light and colour with a unique and exceptional precision.

Much of his inspiration came from his travels around Britain and continental Europe. His allegorical, almost theatrical, compositions mix reality and imagination, and incorporate motifs from classical mythology, literature, art and poetry. The human figures appear tiny, vulnerable in contrast to the immensity of the landscape that surrounds them. His works display the relentless power of the forces of nature.



J. M. W. Turner

The Mouth of the River Humber, c. 1824-5

Tate: Accepted by the nation as part of the Turner Bequest 1856

Turner succeeds in laying bare the powerful and changing effect of light on the atmosphere. It was **his great obsession, the most powerful of elements, capable of altering mood and emotions like no other.** The work of J. M. W. Turner continues to be as impressive for today's public as it was for his contemporaries.

J. M. W. Turner
*Buttermere Lake,
 with Part of
 Cromackwater,
 Cumberland,
 a Shower,
 exhibited 1798*

Tate: Accepted by the nation
 as part of the Turner
 Bequest 1856



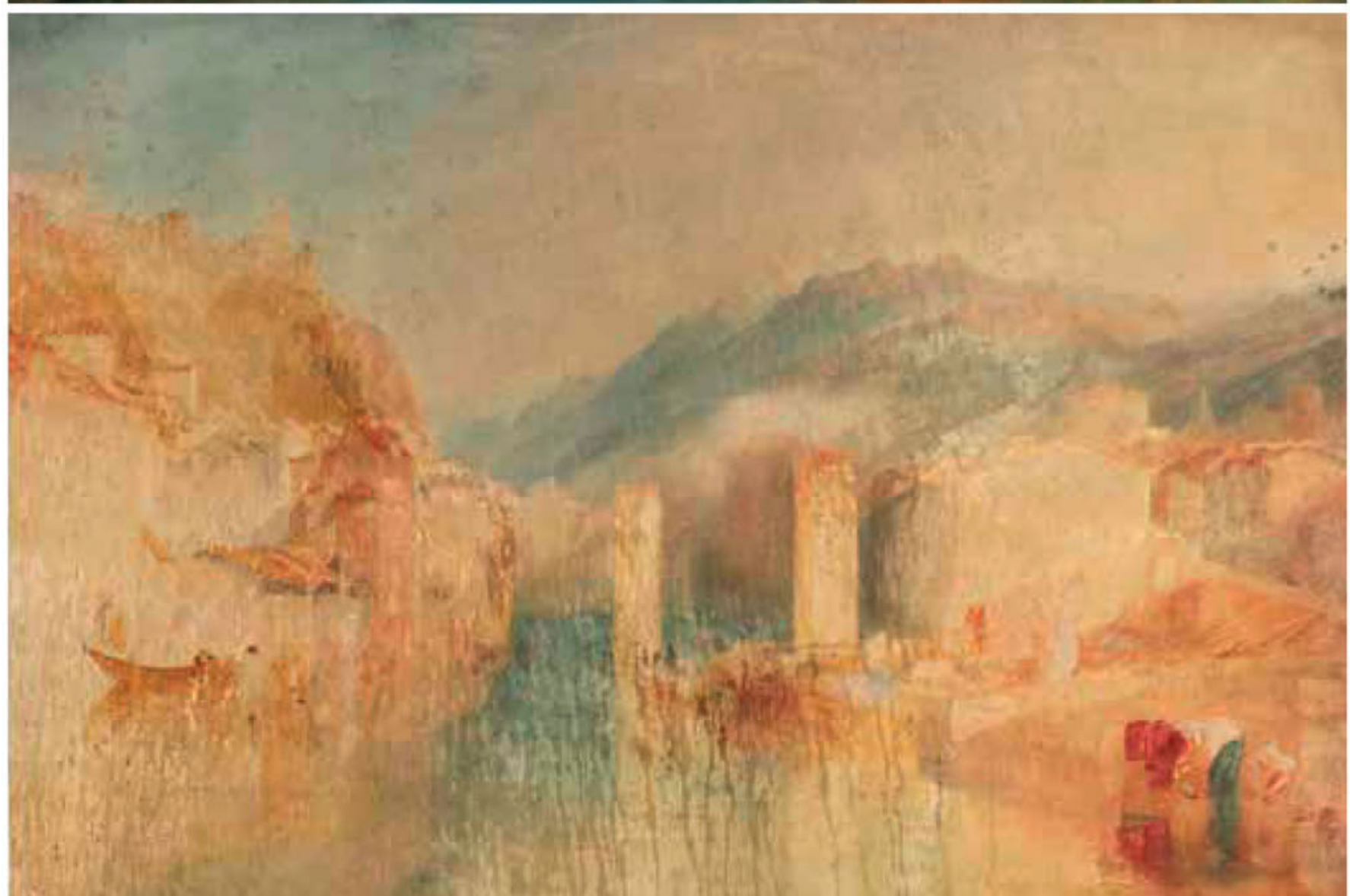
J. M. W. Turner
*Venice, the Piazzetta
 with the Ceremony
 of the Doge Marrying
 the Sea, c. 1835*

Tate: Accepted by the nation
 as part of the Turner
 Bequest 1856



J. M. W. Turner
*Grenoble Bridge,
 c. 1824*

Tate: Accepted by the nation
 as part of the Turner
 Bequest 1856



J. M. W. Turner
*The Ponte Delle
Torri, Spoleto,
c. 1840-5*

Tate: Accepted by the nation
as part of the Turner
Bequest 1856



Cover

J.M.W Turner
*Going to the Ball,
(San Martino).*
Detail,
exhibited 1846

Tate: Accepted by the nation
as part of the Turner
Bequest 1856



#WilliamTurner

Become a Friend of the Museum!
www.amicsmuseunacional.org

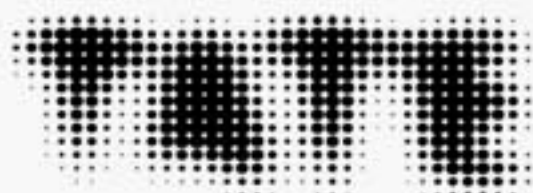
Organised by

**MUSEU
NACIONAL
D'ART DE
CATALUNYA**

Parc de Montjuïc
Barcelona
www.museunacional.cat



Collaborator



Sponsored by

Agrolimen