

MUSEU  
NACIONAL  
D'ART DE  
CATALUNYA  
BARCELONA

Parc de Montjuïc  
Barcelona  
[www.museunacional.cat](http://www.museunacional.cat)

gifts catalogue

MUSEU NACIONAL D'ART DE CATALUNYA





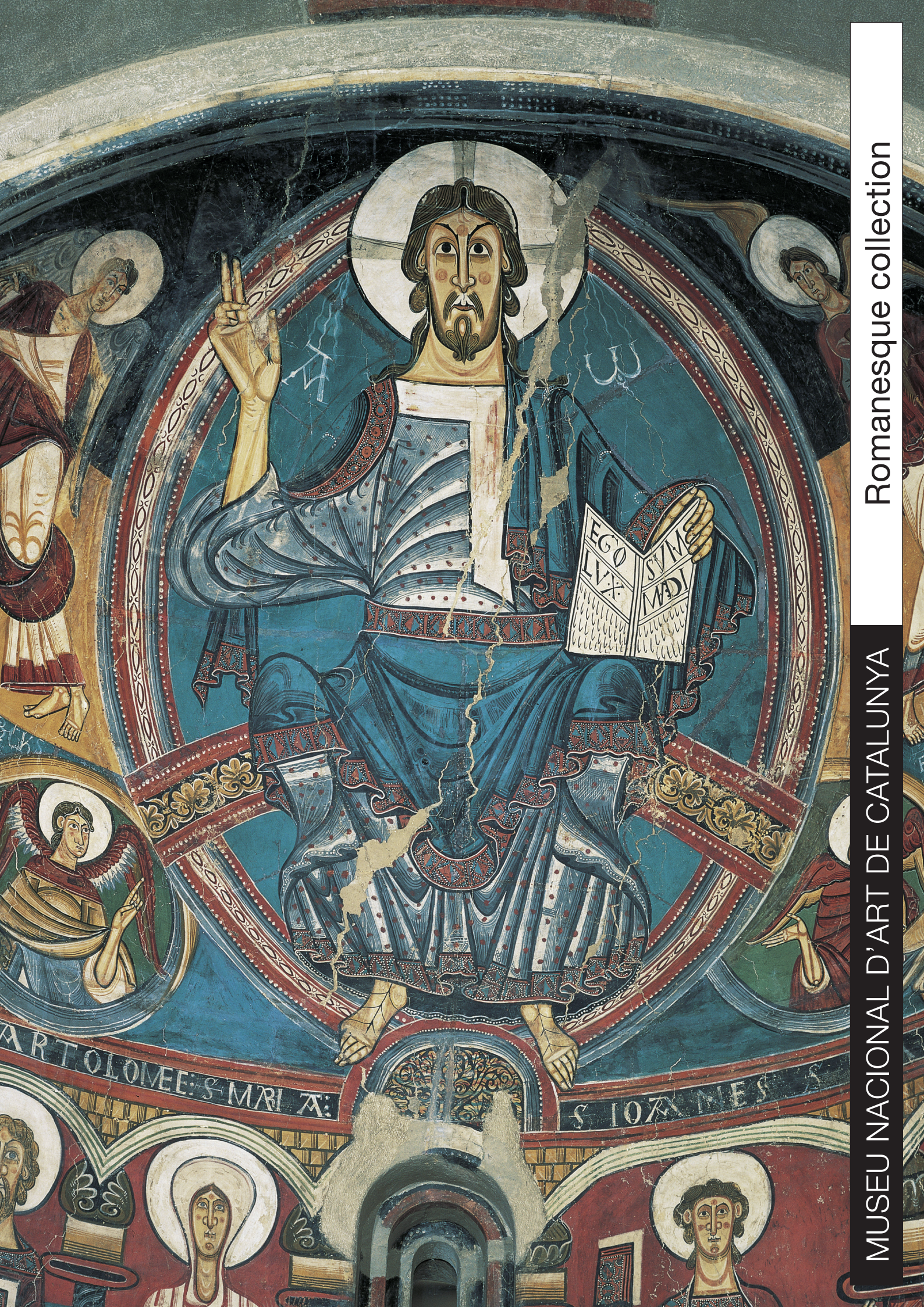


The Museu Nacional d'Art de Catalunya shop offers a wide range of exclusive products, designed and produced specifically for the Museum, which have been carefully selected, based on a quality and originality criteria.

By this catalogue we offer a selection of objects inspired by the collection of Romanesque art, the essence of the medieval world and the history of the West. As well as a wide range of items and designs based on the most remarkable Modernism artist: Antoni Gaudí.

Ceramics, textiles, jewellery, reproductions.... The most beautiful way for taking with you part of the most relevant moments of Catalan Art and of the Barcelona city.







## The Romanesque medieval collection

The Museu Nacional d'Art de Catalunya Romanesque art collection is, without no doubt, one of the most relevant in the world, merged by an exceptional group of mural paintings and by the largest and most ancient collection of table paintings in Europe. Formed by XI to XIII century artworks, the masterpiece is the Sant Climent de Taüll group of paintings with the Boí Master's Pantocrator or Christ in Majesty iconic figure.



*Sant Climent de Taüll Apse, towards 1123 (detail)*



Ipad or Tablet case, jacquard fabric with black screen printing of the eye of the Pantocrator inspired in the Christ in Majesty of the Boí Master.

Blue, **Measures:** 25,5 x 20 cm **Ref.:** 898496

Pink, **Measures:** 25,5 x 20 cm **Ref.:** 898497

Green, **Measures:** 25,5 x 20 cm **Ref.:** 898498

Turquoise, **Measures:** 25,5 x 20 cm **Ref.:** 898500

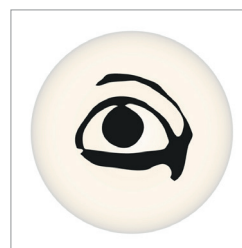
Red, **Measures:** 25,5 x 20 cm **Ref.:** 898499



Notebook with elastic band, serigraph of the eye of the Pantocrator in black. Chlorine-free.

Red, **Measures:** 8,5 x 13 cm **Ref.:** 898760

Green, **Measures:** 8,5 x 13 cm **Ref.:** 898764



Round rubber eraser with the eye of the Pantocrator stamped in black. Inspired in the Boí Master's Christ in Majesty.

**Ref.:** 896848



Created exclusively for Laie, ceramic mug decorated with the eye of the Christ in Majesty (Pantocrator), the most important work of the Catalan Romanesque. Available in several colours.

**Measures:** 8 x 7 (mouth diameter) x 4,5 cm (base diameter) **Ref.:** 886379



Black bag in 100% cotton with long handle with the eye of the Pantocrator of Sant Climent de Taüll reproduction, a masterpiece of Catalan Romanesque architecture.

**Measures:** 36 x 41 cm (diameter base). Made in Barcelona.  
Pink, **Ref.:** 898776 Green, **Ref.:** 898777



100% cotton man's T-shirt stamped with serigraphy bases in the Pantocrator eye. Made in Barcelona

**Size:** M **Ref.:** 890820

**Size:** L **Ref.:** 890821

**Size:** XL **Ref.:** 890822



100% cotton woman's T-shirt stamped with serigraphy bases in the Pantocrator eye. Made in Barcelona

**Size:** S **Ref.:** 890823

**Size:** M **Ref.:** 890824

**Size:** L **Ref.:** 890825

**Size:** XL **Ref.:** 898765



Full print T-shirt with the Sant Climent de Taüll central apse and with the Christ in Majesty or Pantocrator, made towards 1123. Made in Barcelona

**Size:** M **Ref.:** 898981

**Size:** L **Ref.:** 898982

**Size:** XL **Ref.:** 898983

**Size:** XXL **Ref.:** 904103



Flexible resin key ring decorated on both sides with the detail of the Sant Climent de Taüll central apse.

**Ref.:** 827475





Set of 2 coffee cups decorated with a detail of the Sant Climent de Taüll central apse. Front and back view.

**Ref.:** 898993



Passe-partout postcard with the Crist in Majesty reproduction of the Sant Climent de Taüll paintings, c.1123.

**Mesures:** 28 x 35 cm **Ref.:** 842569

Wooden pencil decorated with a detail of the Sant Climent de Taüll central apse.

**Ref.:** 909031

Ceramic mug with the Sant Climent de Taüll Christ in Majesty or Pantocrator reproduction.

**Ref.:** 959829





Earrings in relief decorated with a vegetal motive that decorates a Romanesque capital.

**Material:** Sterling silver **Ref.:** 832084



Earrings in relief decorated with one of the details of the Sant Pere de Rodes (Alt Empordà) Romanesque monastery's rosette. Finished with the "Catalan closing", which perpendicularly follows all the lobe behind the ear.

**Material:** Sterling silver **Ref.:** 832085



Cuff bracelet with motifs of the ancient Romanesque Barcelona Cathedral's (end of the XI century) columns decorative elements.

**Material:** Sterling silver **Ref.:** 832111



This pendant is a reproduction of one of the Ripoll Benedictine monastery (S. XII) voussoirs in which a ram protrudes from the open mouth of a monstrous figure. It hangs from a silk black twine with a silver clasp.

**Material:** sterling silver **Ref.:** 832098



Ring shaped necklace with a three part pendant representing straight or on the waveform figures of the mourners that decorate the chevalier's Sancho Sánchez Carrilloch tomb in the San Andrés de Mahamud (Burgos) hermitage.

**Material:** sterling silver **Ref.:** 839669



Dragon shaped brooch. Being part of the Boí Valley's Romanesque group bestiary, often used by the Boi Master on the interior decoration of the churches, along with other mythical beasts.

**Material:** sterling silver **Ref.:** 832104



Square shaped brooch with a representation in relief of the whimsical animal, it is a figure of the medieval bestiary called "Carcoliti". It can be seen in the Sant Joan de Boí (Valle de Boí) church's murals.

**Material:** sterling silver **Ref.:** 832088





*Gaudí*

## Gaudí's modernist building interiors

The architect Antoni Gaudí was a global creator who took care of translating his vision of the organic form in all the details of his projects, even in the smallest ones. Being aware that the buildings had to have a type of furniture matching the building, he designed several chairs, benches, mirrors, door knobs or even door peephole creating forms with the most possible ergonomic and functional potential.

The Museu Nacional d'Art de Catalunya holds the most comprehensive representation of what the Modernisme meant in all the arts: painting, sculpture, advertisements and of course, house furniture of the bourgeoisie of the XIX and the XX centuries such as the Casa Batlló and other relevant pieces coming from the Sagrada Família basilica.



Half way between furniture and sculpture, the Catalan architect Antoni Gaudí, knew how to show its organic vision of form in all his projects. This reproduction, in actual size, is a sample of this. Based on the original work that the architect designed for the Casa Calvet's (1899) ground floor and main hall.

**Material:** Solid oak wood, hand-carved and varnished, without using nails

**Dimensions:** 65 x 95 x 54 cm **Weight:** 30 Kg

**Ref.:** 271109

This reproduction, in actual size, is based in the original work that the architect designed for the Casa Calvet's (1899) ground floor and main hall.

**Material:** Solid oak wood, hand-carved and varnished, without using nails.

**Dimensions:** 55 x 65 x 40 cm **Weight:** 10.500 g

**Ref.:** 271349





This reproduction, in actual size, shows a bench with a seatback composed of three large flowers, surrounded by three other floral motifs. It highlights the fact that the connection between the arm and the backrest is fully cantilevered, which adds to the art piece great splendour and lightness in spite of its considerable dimensions, being of special interest for its decorative richness.

**Material:** Solid oak wood. **Measures:** 118 x 95 x 54 cm

**Ref.:** 747993



Based on the original work that the architect designed for the Casa Calvet's (1899) ground floor and main hall, on this reproduction the detail in relief nature highlights, in this case it is represented by flowers.

**Material:** Solid oak wood, hand-carved and varnished, without using nails.

**Dimensions:** 100 x 57 x 60 cm. **Weight:** 8.000 g

**Ref.:** 271138





Reproduction, in actual size, of one of the most emblematic pieces of modernist design of the Catalan architect Antoni Gaudí. Such reproduction corresponds to the original one that he sketched for the Casa Batlló (1906).

**Material:** Solid oak wood, hand-carved and varnished, without using nails.

**Measures:** 170 x 103 x 81 cm **Ref.:** 511705



Reproduction, in actual size, of one of the most emblematic pieces of modernist design of the Catalan architect Antoni Gaudí. Such reproduction corresponds to the original one that he sketched for the Casa Batlló (1906).

**Material:** Solid oak wood, hand-carved and varnished, without using nails.

**Measures:** 50 x 75 x 50 cm **Weight:** 7.500 g **Ref.:** 271108





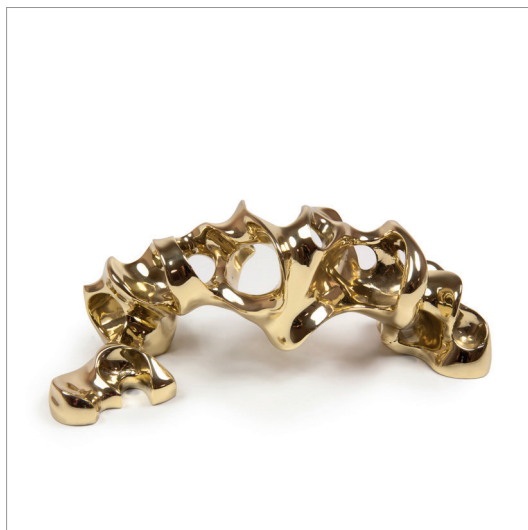
Mirror reproduction of the original one for the Casa Calvet (1899). Solid oak wood, hand-carved and varnished, with a chrome coating.

**Measures:** large 35 x 100 x 10 cm  
**Weight:** 8.000 g **Ref.:** 271114

Mirror in solid oak wood, hand-carved and varnished, without using nails, showing the details of the furniture designed by the architect Antoni Gaudí for the Calvet and Batlló houses.

**Measure:** large 35 x 100 x 10 cm **Weight:** 8.000 g **Ref.:** 271113





Reproduction of a big door handle model for a big door designed by Antoni Gaudí for the entrance doors for the Casa Calvet flats, (Barcelona, 1898-1904). Bright polished brass, artisanally worked in Barcelona.

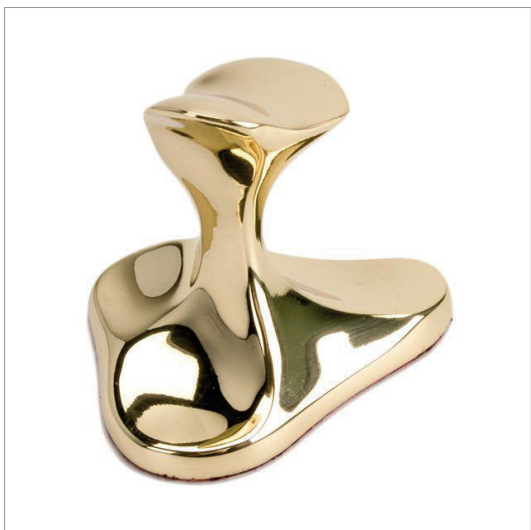
**Measures:** 6,8 x 22,6 x 10 cm **Ref.:** 271342



Peephole model reproduction originally designed by Antoni Gaudí for the Casa Calvet (Barcelona, 1898-1904) entrance doors. Bright polished brass, artisanally worked in Barcelona.

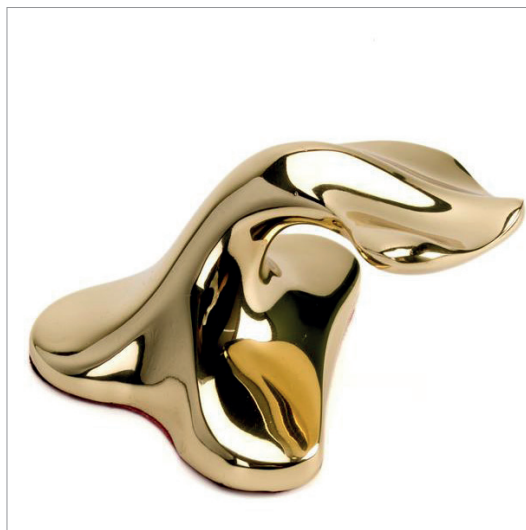
**Measures:** 6,8 x 22,6 x 10 cm **Ref.:** 271405





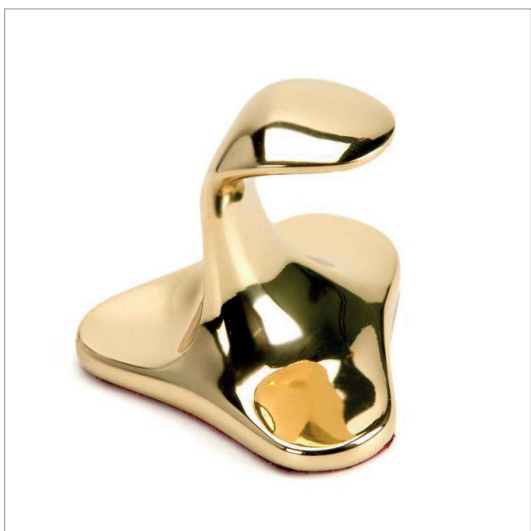
Loyal reproduction of a small ergonomic door handle with a heart shape designed by Antoni Gaudí for the Casa Milà, known as "La Pedrera" ("the quarry"), (Barcelona, 1906-1912). Bright polished brass handcrafted in Barcelona.

**Measures:** 4,8 x 5 cm **Ref.:** 271341



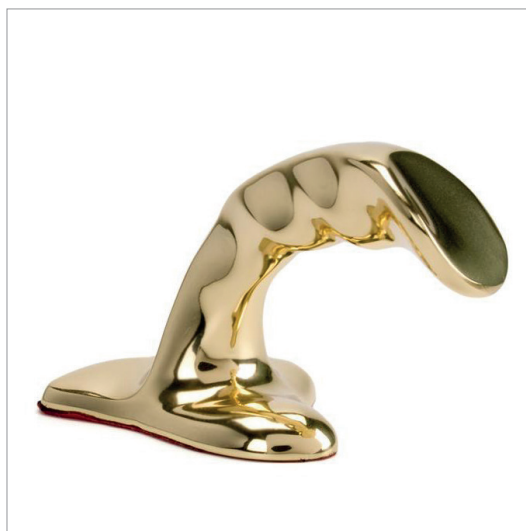
Loyal reproduction of a small ergonomic door handle with a leaf shape designed by Antoni Gaudí for the Casa Milà, known as "La Pedrera" ("the quarry"), (Barcelona, 1906-1912). Bright polished brass handcrafted in Barcelona.

**Measures:** 6 x 5,2 x 4,5 cm **Ref.:** 271339



Loyal reproduction of a small ergonomic door handle designed by Antoni Gaudí for the Casa Milà, known as "La Pedrera" ("the quarry"), (Barcelona, 1906-1912). Bright polished brass, handcrafted in Barcelona.

**Measures:** 4,5 x 5 cm **Ref.:** 271343



Loyal reproduction of a small ergonomic door handle designed by Antoni Gaudí for the Casa Milà, known as "La Pedrera" ("the quarry"), (Barcelona, 1906-1912). Bright polished brass handcrafted in Barcelona.

**Measures:** 7,2 x 5,5 x 6,2 cm **Ref.:** 271340





Miniature reproduction of an ergonomic armchair designed by Antoni Gaudí for one of his first works: the Casa Calvet, (Barcelona, 1898-1904). Hand-carved wood.

**Measures:** 15 x 12 x 9,5 cm **Ref.:** 708394





Miniature reproduction of an ergonomic double bench designed by Antoni Gaudí for one of his first works: the Casa Calvet, (Barcelona, 1898-1904). Hand-carved wood.

**Measures:** 23,5 x 11,5 x 14,5 cm

**Ref.:** 708393



Miniature reproduction of one of the chairs that Antoni Gaudí designed for the Casa Batlló, (Barcelona, 1904-1907). Hand-carved wood.

**Measures:** 7,5 x 14 x 8,5 cm

**Ref.:** 708389

*Gaudí*



The architect Antoni Gaudí was worried about all the details in the design of their buildings, even the smallest ones. It is said that he designed door handles with his own hands using clay to create forms the most ergonomic and functional as it was possible.

These porcelain cups produced in Barcelona by artisans have as special touch, the handles in natural shapes. In this way this everyday object becomes a participant in the genius of the great Gaudí.



Porcelain cup produced by Barcelona artisans with a handle in a shape of a rounded knob. Not suitable for microwave use. Hand wash or soft washing is recommended in dishwasher program.

**Measures:** 10 x 8 cm, knob de 5 cm **Ref.:** 995426

**Material:** white porcelain covered with Limoges enamel, hand painted handle with a bright gold finishing.

**Inspiration:** Antoni Gaudí (1852-1926)



Porcelain cup produced by Barcelona artisans with a handle in a leaf shape. Not suitable for microwave use. Hand wash or soft washing is recommended in dishwasher program.

**Measures:** 10 x 8 cm, pomo de 7 cm **Ref.:** 995436

**Material:** white porcelain covered with Limoges enamel, hand painted handle with a bright gold finishing.

**Inspiration:** Antoni Gaudí (1852-1926)



This porcelain cup reproduces one of the original knobs designed by Gaudí.

Not suitable for microwave use. Hand wash or soft washing is recommended in dishwasher program.

**Measures:** 10 x 8 cm, knob de 8 cm **Ref.:** 995424

**Material:** white porcelain covered with Limoges enamel, hand painted handle with a bright gold finishing.

**Inspiration:** Antoni Gaudí (1852-1926)



Key ring decorated with a wooden effect and with a screen printed image including Antoni Gaudí's signature along with the Calvet armchair, one of the chairs was designed by him.

**Inspiration:** Antoni Gaudí (1852-1926)

**Material:** plastic

**Measures:** 10 x 6 cm **Ref.:** 975938



Zip purse decorated with a wood effect and with a screen printed image that meets the signing of Antoni Gaudí along with the Calvet armchair, one of the chairs was designed by him.

**Inspiration:** Antoni Gaudí (1852-1926)

**Material:** plastic

**Measures:** 7 x 9,5 x 4 cm **Ref.:** 977040



Zip pencil case decorated with a wooden effect and with a screen printed image including Antoni Gaudí's signature along with the Calvet armchair, one of the chairs was designed by him.

**Inspiration:** Antoni Gaudí (1852-1926)

**Material:** plastic

**Measures:** 6 x 20 x 5,5 cm **Ref.:** 976362



Notebook with faux wood covers with a screen printed image of the Calvet armchair, one of the chairs was designed by him.

**Inspiration:** Antoni Gaudí (1852-1926)

**Material:** paper and plastic

**Measures:** A6 **Ref.:** 894284



Drawing notebook decorated with a wooden effect and with a screen printed image that includes Antoni Gaudí's signature along with the Calvet armchair, one of the chairs was designed by him.

**Inspiration:** Antoni Gaudí (1852-1926)

**Material:** paper and plastic

**Measures:** 28 x 18,5 cm **Ref.:** 977044



Pencil holder decorated with a wooden effect and with a screen printed image that includes Antoni Gaudí's signature along with the Calvet armchair, one of the chairs was designed by him.

**Inspiration:** Antoni Gaudí (1852-1926)

**Material:** plastic

**Measures:** 9 x 8 cm **Ref.:** 977042





*Gaudí*

## Gaudí's *trencadís* Barcelona

Antoni Gaudí was the precursor of the *trencadís* (in catalan it means "broken" ) decorative technique, which is conceived for using tiles remains rejected by the factories. The technique consisted in selecting already decorated tiles, breaking them which in different pieces and matching the pieces to decorate different surfaces. Barcelona's Park Güell is one of the main places where you can appreciate this decorative technique.



1000 piece Butterfly Puzzle that reproduces the image of the detail of one of *trencadís* mosaics that decorate Gaudí's Park Güell.

**Measures:** 68 x 48,5 cm puzzle **Ref.:** 797041



1000 piece Trece Puzzle that reproduces the image of the detail of one of *trencadís* mosaics that decorate Gaudí's Park Güell.

**Measures:** 68 x 48,5 cm puzzle **Ref.:** 797042





Pink flower vinegar container decorated with the image of the detail of one of the *trencadís* mosaics that decorate Gaudí's Park Güell.

**Measures:** 28 x 12 cm **Ref.:** 865228



Pink flower hip flask vase decorated with the image of the detail of one of the *trencadís* mosaics that decorate Gaudí's Park Güell.

**Measures:** 18 x 19 cm **Ref.:** 865225

Pink flower vase decorated with the image of the detail of one of the *trencadís* mosaics that decorate Gaudí's Park Güell.

**Ref.:** 865230



Butterfly scented soap decorated with the image of one of the *trencadís* mosaics that decorate Gaudí's Park Güell.

**Measures:** 7,5 cm **Ref.:** 783580



Pink flower lacquered fan decorated with the image of one of the *trencadís* mosaics that decorate Gaudí's Park Güell.

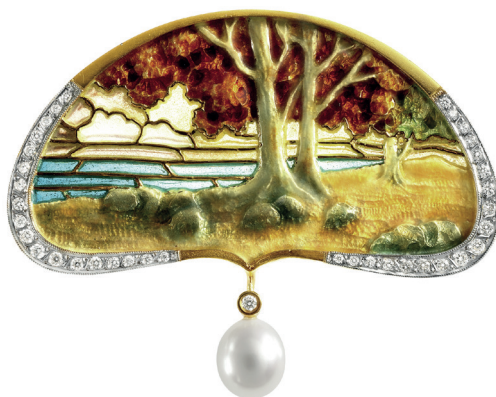
**Ref.:** 865733



Butterfly 100% silk scarf decorated with the image of one of the *trencadís* mosaics that decorate Gaudí's Park Güell.

**Ref.:** 875254





# MASRIERA



## Barcelona Modernism collection

### Bagués-Masriera

Lluís Masriera is considered to be the most outstanding jeweller of the Modernist Catalan movement and one of the main representatives Art Nouveau international jewellery for his artistic works, pieces and jewellery in enamel and in gold. Even nowadays, the use of his technique has made him an international reference: the plique-à-jour, the basse-taille, the champlevé, the glass or the enamel painting.



Masriera Green silk headscarf  
**Measures:** 180 x 40 cm **Ref.:** 875249



Masriera Coral silk headscarf  
**Measures:** 180 x 40 cm **Ref.:** 875250



Masriera silk scarf  
**Measures:** 90 x 90 cm **Ref.:** 875251

MASRIERA



Masriera silk cushion, Fairy profile view  
**Measures:** 30 x 30 cm **Ref.:** 781179



Masriera silk cushion, Butterfly  
**Measures:** 30 x 30 cm **Ref.:** 781175



Masriera silk cushion, Flower  
**Measures:** 30 x 30 cm  
**Ref.:** 781177





Masriera aromatic Flower of Spring Fairy mikado, with an orange blossom, osmanthus, amber, honey, vanilla, vetiver, musk and woods fragrance

**Measures:** 26 x 8,70 x 8,70 cm

**Size:** 100 ml **Ref.:** 798055



Masriera aromatic Mediterranean Dawn Fairy mikado, with an orange, Neroli, jasmine, gardenia, peony and patchouli fragrance

**Measures:** 26 x 8,70 x 8,70 cm

**Size:** 100 ml **Ref.:** 798057



Masriera aromatic Summer Flower mikado, with a redcurrant, rose and lily fragrance

**Measures:** 26 x 8,70 x 8,70 cm

**Size:** 100 ml **Ref.:** 798056

Masriera aromatic Undergrowth Forest, with a bergamot, lemon, cinnamon, rosewood, cedar, sandalwood, vanilla and vetiver fragrance

**Measures:** 26x8,70 x8,70 cm

**Size:** 100 ml **Ref.:** 798054





Masriera brooch of modernist inspiration that represents the figure of a winged nymph from the back view. It uses the fire enamel technique, refined in its time by the Catalan jeweler, providing brightness and translucence to the piece. Masriera (1872-1958) was a jeweler related to the European Art Nouveau and globally well known for its artistic work.

**Material:** 18-carat yellow gold and pearl

**Design:** Bagués-Masriera

**Ref.:** 708651



Masriera brooch of modernist inspiration that represents the figure of a winged nymph from the back view. It uses the fire enamel technique, refined in its time by the Catalan jeweler, providing brightness and translucence to the piece. Masriera (1872-1958) was a jeweler related to the European Art Nouveau and globally well known for its artistic work.

**Material:** 18-carat yellow gold and pearl

**Design:** Bagués-Masriera

**Measures:** 5,2 x 4 cm **Ref.:** 268445

# MASRIERA

jewells



**MUSEU  
NACIONAL  
D'ART DE  
CATALUNYA**  
BARCELONA

Parc de Montjuïc  
Barcelona  
[www.museunacional.cat](http://www.museunacional.cat)

© laieproduccions

